

Metal Foam

なぜフォームなのか？

Prof. M.F.Ashby, University of Cambridge

When a modern man builds large load-bearing structures,

he uses dense solids; steel, concrete, glass.

When nature does the same,

she generally uses cellular materials; wood, bone, coral.

There must be good reasons for it.

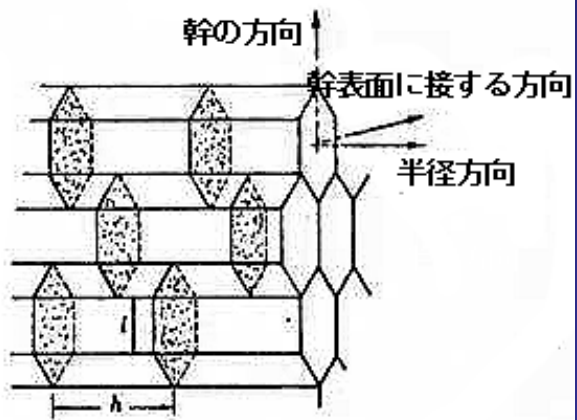
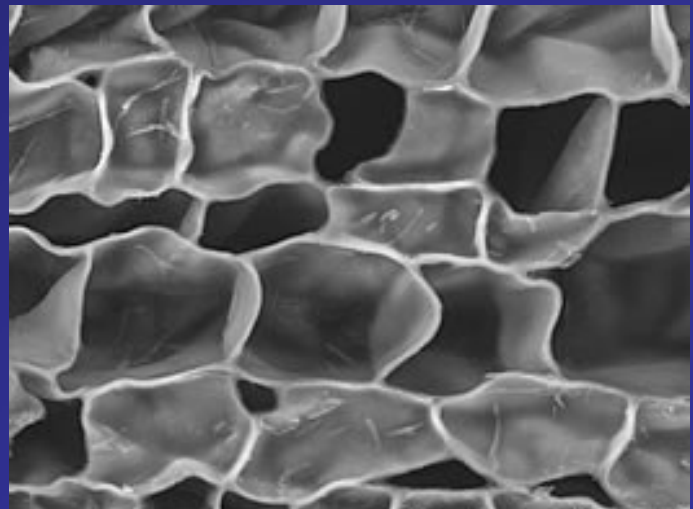
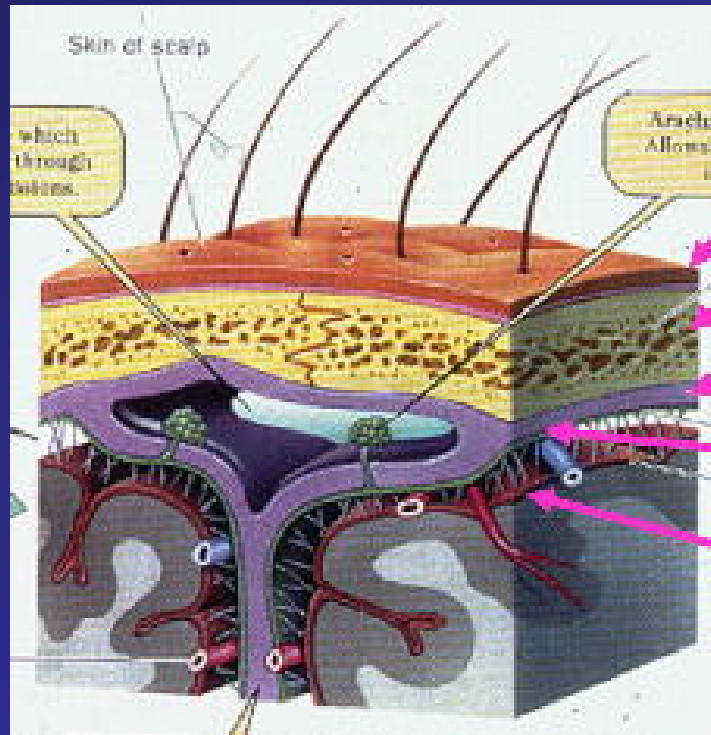


図-1 コルク細胞の構造



Ballet; ballerina





頭皮

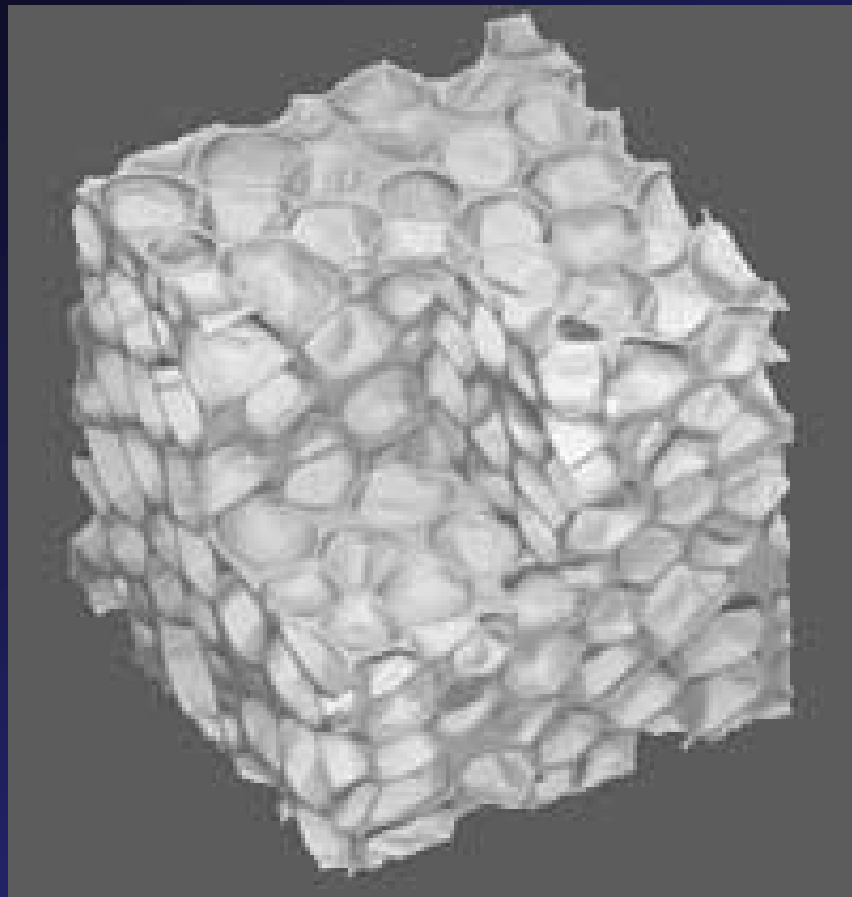
頭蓋骨

硬膜

軟膜

軟膜

人工的に作ったメタルフォーム



吸音材料の例

