

Roles of regulatory T cells in cancer immunity

Journal:	<i>International Immunology</i>
Manuscript ID	INTIMM-16-0046.R1
Manuscript Type:	Invited Review
Date Submitted by the Author:	n/a
Complete List of Authors:	Nishikawa, Hiroyoshi; National Cancer Center, Division of Cancer Immunology Takeuchi, Yoshiko; National Cancer Center, Division of Cancer Immunology
Keywords:	Immune suppression, Immune checkpoint blockade, Treg-targeted therapy

Invited Review Article:**Roles of regulatory T cells in cancer immunity**

Yoshiko Takeuchi¹ and Hiroyoshi Nishikawa^{1,2}

¹Division of Cancer Immunology, EPOC, National Cancer Center, 6-5-1 Kashiwanoha, Kashiwa, Chiba, 277-8577, Japan

²Department of Immunology, Nagoya University Graduate School of Medicine, 65 Tsurumai, Showa-ku, Nagoya 466-8550, Japan

Running title: Regulatory T cells in cancer immunity

Keywords: Immune suppression, Immune checkpoint inhibitors, T_{reg} -targeted therapy

Correspondence to:

H. Nishikawa, MD, PhD

Division of Cancer Immunology, EPOC, National Cancer Center

Address: 6-5-1 Kashiwanoha, Kashiwa, Chiba 277-8577, Japan

TEL: +81-4-7133-1111, FAX+81-4-7130-0022

Email: hnishika@east.ncc.go.jp

Abstract

CD4⁺ regulatory T cells (T_{regs}) expressing the transcription factor FoxP3 are highly immune suppressive and play central roles in the maintenance of self-tolerance and immune homeostasis, yet in malignant tumors they promote tumor progression by suppressing effective anti-tumor immunity. Indeed, higher infiltration by T_{regs} is observed in tumor tissues, and their depletion augments anti-tumor immune responses in animal models. Additionally, increased numbers of T_{regs} and, in particular, decreased ratios of CD8⁺ T cells to T_{regs} among tumor-infiltrating lymphocytes are correlated with poor prognosis in various types of human cancers. The recent success of cancer immunotherapy represented by immune checkpoint blockade has provided a new insight in cancer treatment, yet more than half of the treated patients did not experience clinical benefits. Identifying biomarkers that predict clinical responses and developing novel immunotherapies are therefore urgently required. Cancer patients whose tumors contain a large number of neo-antigens stemming from gene mutations, which have not been previously recognized by the immune system, provoke strong anti-tumor T-cell responses associated with clinical responses following immune checkpoint blockade, depending on the resistance to T_{reg}-mediated suppression. Thus, integration of a strategy restricting T_{reg}-mediated immune suppression may expand the therapeutic spectrum of cancer immunotherapy towards patients with a lower number of neo-antigens. In this review, we address the current understanding of T_{reg}-mediated immune suppressive mechanisms in cancer, the involvement of T_{regs} in cancer immunotherapy, and strategies for effective and tolerable T_{reg}-targeted therapy.

Introduction

CD4⁺ regulatory T cells (T_{regs}) are a highly immune suppressive subset of CD4⁺ T cells, characterized by expression of the master regulatory transcription factor FoxP3 [1-3]. T_{regs} were originally identified as CD4⁺CD25⁺ T cells by Sakaguchi *et al.* in 1995 [4] and are proven to play central roles in the maintenance of self-tolerance in healthy individuals [5-9]. T_{reg} deficiency due to mutations in the *FOXP3* gene results in fatal autoimmune disorders and allergy in both mice and humans [5,6,7]. T_{regs} are therefore involved in maintaining immune homeostasis: they protect hosts from developing autoimmune diseases and allergy, whereas in malignancies, they promote tumor progression by suppressing effective anti-tumor immunity. [8,9].

Cancer cells harboring inherent genetic instability form new antigens (so-called neo-antigens), which have not been previously recognized by the immune system. To avoid immune surveillance targeting immunogenic cancer antigens including neo-antigens, cancers acquire resistance and escape machineries against the immune system by selecting less-immunogenic cells, and establishing an immunosuppressive environment using immunosuppressive elements to become clinically apparent “cancers”. In cancer immunity, immune suppressive cytokines, molecules and cells including T_{regs} constitute the immunosuppressive network in tumor tissues to inhibit effective anti-tumor immunity, thereby promoting cancer progression [10,11].

Cancer immunotherapy represented by blockade of immune checkpoint molecules such as CTLA-4 and PD-1 has provided remarkable

clinical efficacy across multiple cancer types even in patients with advanced cancers [12-27]. Long-term follow-up in a pooled meta-analysis of 1861 melanoma patients receiving the anti-CTLA-4 antibody, ipilimumab, in phase II or III trials revealed prolonged survival in approximately 20 percent, in some cases extending to 10 years [28]. The cohort of the phase I clinical trial for the anti-PD-1 antibody, nivolumab, in heavily pretreated solid cancers showed overall survival of 9.9, 22.4, and 16.8 months in melanoma, non-small cell lung cancer and renal cell carcinoma, respectively [14].

However, accumulating data have uncovered that these durable responses are only observed in approximately 20 to 30 percent of the treated patients [28], indicating the importance of identifying biomarkers to predict clinical responses in addition to developing novel cancer immunotherapies. Clinical efficacy after immune checkpoint blockade is reportedly associated with the somatic mutational burden in the tumor cells [29-32]; that is, clinical benefit is limited to those whose cancer cells harbor mutation-derived neo-antigens (not present in normal cells) being recognized as “non-self” by the immune system [33,34]. T_{regs} engaged in self-tolerance favorably control the activation of T cell responses to cancer antigens that are derived from self-constituents (so-called shared antigens), but are less suppressive to T cells recognizing foreign antigens [35]. Therefore, it is anticipated that integration of approaches reducing the suppressive activity and/or number of T_{regs} with approaches blocking immune checkpoint molecules, can broaden the therapeutic spectrum of cancer immunotherapy to cancer patients who have a lower number of neo-antigens.

Here we will review the current understanding of T_{reg} -mediated immune

suppressive mechanisms in cancer, the involvement of T_{regs} in cancer immune therapy, and future therapeutic strategies targeting T_{regs} .

Natural and induced T_{regs}

T_{regs} are separated into natural/thymic and peripherally induced T_{regs} on the basis of the sites in which they are generated [8,36]. Although not fully clarified in humans, natural/thymic T_{regs} stem from self-reactive thymocytes present in the thymus [8]. A fraction of $CD4^+CD8^-$ thymocytes receive TCR stimulation by complexes of MHC plus self-peptide and acquire expression of CD25, through which IL-2 transmits signals via STAT5 to express FoxP3, resulting in differentiation into T_{regs} [37-39]. Natural/thymic T_{regs} reportedly express high levels of Helios (a member of the Ikaros transcription factor family) and Neuropilin-1 (a type-1 transmembrane protein). In contrast, T_{regs} that develop in the periphery often lack or have a low level expression of these molecules.

According to data from animal models, these peripherally induced T_{regs} are readily converted from conventional T cells by *in vitro* stimulation with TGF- β or retinoic acid [40]. However, in humans, FoxP3 $^+$ T cells induced from conventional T cells by *in vitro* TCR stimulation with TGF- β fail to gain suppressive function and rather produce pro-inflammatory cytokines [41,42]. At present, the function of peripherally induced T_{regs} such as TGF- β -induced ones in humans is obscure though there are some reports showing that several cytokines or a specific microbiota environment can induce T_{regs} with a suppressive function from $CD4^+CD25^-$ T cells [43,44]. Yet it remains to be determined whether these peripherally induced FoxP3 $^+$ T_{regs} are functionally

stable *in vivo*. Therefore, in this review, the T_{regs} we will refer to are natural/thymic T_{regs} unless otherwise specified.

Identification and functional classification of human T_{regs}

FoxP3 is the master regulatory molecule in T_{regs} , and expression of FoxP3 represents the T_{reg} population in mice. In contrast, to define T_{regs} definitely in humans causes difficulty due to the up-regulation of FoxP3 following activation of naive T cells [42]. As CD25 is an activation marker and its expression is not confined to T_{regs} , additional markers are needed. Although $CD4^+CD25^+$ T cells with additional low level expression of CD127 (the α -chain of the IL-7 receptor) were reported to possess FoxP3 expression and suppressive function [45,46], CD127 is also down-regulated following recent activation of naive T cells that also express low level of FoxP3 [47], suggesting possible contamination of non- T_{regs} in the $CD127^{\text{low}}CD4^+CD25^+$ T-cell fraction.

We have therefore proposed a classification of human T_{regs} based on expression levels of CD45RA and FoxP3 (Fig. 1, Table 1) [8,11,48]. $FoxP3^+CD4^+$ T cells can thus be divided into three fractions: naive T_{regs} (nT_{regs} : $CD45RA^+FoxP3^{\text{low}}CD4^+$); effector T_{regs} (eT_{regs} : $CD45RA^-FoxP3^{\text{high}}CD4^+$); and non- T_{regs} ($CD45RA^-FoxP3^{\text{low}}CD4^+$). The nT_{regs} have recently egressed from the thymus, have not yet been activated in the periphery and possess weak suppressive activity. Upon activation with TCR stimulation, nT_{regs} vigorously proliferate and differentiate into highly suppressive eT_{regs} . In contrast, non- T_{regs} are not immune suppressive but are rather immune stimulatory T cells, producing inflammatory cytokines including IFN- γ and IL-17 [48].

This classification, based on T_{reg} function, reflects the pathophysiology of autoimmune and inflammatory diseases. Both sarcoidosis patients lacking tuberculin reaction because of an immune suppressive state and systemic lupus erythematosus (SLE) patients with systemic auto-immunity have increased $FoxP3^+CD4^+$ T cells in the peripheral blood [48]. In our classification with CD45RA and FoxP3 expression, highly suppressive eT_{regs} ($CD45RA^-FoxP3^{high}CD4^+$) are the dominant component of $FoxP3^+CD4^+$ T cells in the former, whereas $FoxP3^+$ non- T_{regs} ($CD45RA^-FoxP3^{low}CD4^+$) are increased in the latter [48], clearly demonstrating the clinical state of these patients — an immune suppressive state and a dysregulation of self-tolerance in sarcoidosis and SLE, respectively.

Suppressive mechanisms of T_{regs}

T_{regs} exhibit their suppressive activity by numerous cellular and humoral mechanisms (summarized in Table 2) such as suppression of antigen-presenting cells via CTLA-4, secretion of inhibitory cytokines (IL-10, TGF- β and IL-35), expression of granzyme/perforin, consumption of IL-2, and degradation of ATP (reviewed in [8]).

Among these mechanisms, suppression via CTLA-4 (a co-inhibitory receptor constitutively expressed by T_{regs}) and IL-2 consumption via CD25 (the IL-2 receptor α -chain, also constitutively expressed by T_{regs}) appear to play key roles for the following reasons: T_{reg} -specific CTLA-4 deficiency impairs *in vitro* and *in vivo* T_{reg} -mediated suppression [49]; FoxP3 directly suppresses IL-2 gene transcription and up-regulates *CTLA4* and *IL2RA* (which encodes CD25) gene

transcription [2]; and high-dose IL-2 neutralizes *in vitro* T_{reg}-mediated suppression [50,51]. CTLA-4 engages with B7 molecules (i.e. B7-1 and B7-2; CD80 and CD86) on antigen-presenting cells with greater avidity compared with CD28 [52] and provides inhibitory reverse signaling to antigen-presenting cells. In addition, B7 molecules are physically transferred to the surface or the inside of T_{regs} together with CTLA-4 [52]. Then, maturation of antigen-presenting cells (via the co-stimulatory signal from B7 to CD28 on effector cells) is strongly blocked.

T_{regs} suppress effective anti-tumor immune responses

In animal models

The involvement of T_{regs} in tumor immunity was originally reported in 1999 [53,54]. Mice treated with anti-CD25 antibody (which depleted the CD4⁺CD25⁺ T_{regs}) and nude (T cell deficient) mice that were given splenocytes that had been treated with anti-CD25, exhibited tumor rejection and retardation of tumor growth, and interestingly the latter mice simultaneously exhibited autoimmunity in the stomach and the thyroid [53]. Another study showed that intra-tumoral injection of anti-CD4 antibody in tumor-bearing mice caused rejection of late-stage tumors by depleting T_{regs} and altering the cytokine milieu in the tumor microenvironment (TME) [54]. In addition, concomitant tumor immunity, which is a phenomenon that tumor-bearing mice can reject the same tumor cells when inoculated at a distant site, is also suppressed by T_{regs}; mice bearing a poorly immunogenic B16 melanoma, in which concomitant tumor immunity is not evoked, rejected a secondary B16 melanoma challenge when T_{regs} were

depleted by anti-CD4 antibody [55]. Taken together, T_{regs} suppress anti-tumor immunity and promote tumor progression.

In humans

In the TME in melanoma, non-small cell lung, gastric and ovarian cancers, eT_{regs} heavily infiltrate and account for twenty to fifty percent of $CD4^{+}$ T cells, as compared with 5 to 10 percent in the peripheral blood of healthy individuals [11,42]. High infiltration of T_{regs} in tumors is associated with a poor prognosis in various types of cancers including melanoma, non-small cell lung, gastric, hepatocellular, pancreatic, renal cell, breast, and cervical cancers [11,56]. In ovarian cancer, a decreased ratio of $CD8^{+}$ T cells to T_{regs} in tumors is related to poor prognosis [57], indicating suppression of effector $CD8^{+}$ T cells by T_{regs} . Yet in some cancers such as colorectal, head and neck, and bladder cancers, a higher infiltration of $FoxP3^{+}$ T cells is reportedly correlated with better prognosis [58].

In fact, in colorectal cancer we have recently shown that $FoxP3^{+}$ non- T_{regs} heavily infiltrated a fraction of colorectal cancers containing high levels of inflammatory cytokines such as TGF- β and IL-12 and were associated with a better prognosis [59]. The difficulty of distinguishing $FoxP3^{+}$ non- T_{regs} from $FoxP3^{\text{high}}$ eT_{regs} in tumor tissues would have been a major confounding factor in previous studies evaluating the clinical significance of $FOXP3^{+}CD4^{+}$ T cells in colorectal cancers using immunohistochemistry. Therefore, although in some cancers controversies do exist regarding the significance of T_{regs} , T_{reg} -infiltration into a tumor suppresses anti-tumor immunity and generally corresponds to poor

prognosis.

Trafficking and characteristics of T_{regs} in cancer

How and why are activated T_{regs} present in high numbers in tumor sites? T_{regs} appear to be chemo-attracted to the TME (summarized in Table 3). Although the combination of chemokines and their receptors differs in each cancer — i.e. CCR4 with CCL12 in breast and ovarian cancers [60,61]; CCR4 with undefined chemokines in colorectal [62] and oral squamous cancers [63] and in Hodgkin lymphoma [64]; CCR4 with CCL12, CCR10 with CCL28 and CXCR4 with CXCL12 in ovarian cancer [61,65,66]; and CCR5 with CCL5 in pancreatic cancer [67] — blockade of chemotaxis by antibodies or small molecules may result in a reduction in T_{reg} numbers in tumors [67,68].

These T_{reg} -recruiting chemokines are generated in TMEs by macrophages and/or tumor cells. Hypoxia is also reported to induce CCL28 production by ovarian cancer cells and to recruit T_{regs} [65]. Additionally, activated $CD8^+$ T cells infiltrating into the tumor stimulate production of the T_{reg} -recruiting chemokine CCL22 by tumor cells [68]. Moreover, in a mouse model with a xenograft of human melanoma, infiltration by T_{regs} was decreased in the tumor if T_{regs} were transferred alone compared with tumors where T_{regs} and $CD8^+$ T cells were co-transferred, suggesting that initial $CD8^+$ T-cell infiltration stimulates CCL22 production by tumors as an escape mechanism [68].

In the TME, highly immune suppressive eT_{regs} with high-level expression of suppression-related molecules such as CTLA-4 and TIGIT are detected with reduced number of nT_{regs} , indicating a highly activated status of

tumor-infiltrating T_{regs} [11,69]. In breast cancer, RANKL-expressing T_{regs} are reported to promote metastasis of RANK-expressing cancer cells [70] (Fig. 2). One possible mechanism of T_{reg} activation in tumors is that proliferating and dying tumor cells provide a large amount of self-antigens, which T_{regs} might recognize and be activated by as tumors contain a subset of immature dendritic cells that promote the proliferation/stimulation of T_{regs} in a TGF- β -dependent manner [71,72].

In accordance with this, the TCR repertoire of tumor-infiltrating T_{regs} is skewed and largely distinct from that of tumor-infiltrating conventional T cells, suggesting that T_{regs} recognize certain skewed antigens and clonally expand in the TME [73,74]. Indeed, T_{reg} clones established from human melanoma recognize cancer-testis antigens including NY-ESO-1 [75,76], TRAG-3 [75], LAGE-1 [77,78] and ARTC1 (antigen recognized by T_{reg} cells) [79], and differentiation/overexpression self-antigens including gp100, TRP1, and survivin [76]. T_{regs} in human colorectal cancer are known to be reactive to Mucin-1, HER2/neu, CEA, telomerase, survivin and EGFR [80]. WT1 is also reported to be recognized by leukemia-derived T_{regs} [81]. Yet whether these antigens are exclusively recognized by T_{regs} or recognition is shared by helper $CD4^+$ T cells is unclear; however, T_{regs} usually harbor higher affinity TCRs compared with conventional T cells and are predominantly activated in tumors.

Strategies for T_{reg} -targeted therapy

As discussed above, activated e T_{regs} are present at a high frequency in tumors and need to be controlled for the generation/activation of anti-tumor immunity.

Some clinical studies indicated the potential of depleting CD25-expressing lymphocytes to augment anti-tumor immune responses; yet, other similar studies failed to support this. As activated effector T cells in addition to T_{regs} also express CD25, CD25-based cell depletion may reduce activated effector T cells as well, cancelling the effect of T_{reg} depletion to augment anti-tumor immunity. Additionally, one plausible concern is increased autoimmunity-related toxicities following T_{reg} depletion. In order to secure safety of T_{reg}-targeted therapy, selective depletion of eT_{regs} in tumors rather than the entire T_{reg} population can be exploited to augment anti-tumor immunity without eliciting deleterious autoimmunity [69]. Targeting molecules and signals specific for eT_{regs} is being tested in clinical trials as an effective strategy for eT_{reg} depletion.

Humanized IgG1 monoclonal antibody targeting CCR4: mogamulizumab

We showed that CCR4 was specifically expressed by a subset of suppressive eT_{regs} abundant in melanoma, and treatment using anti-CCR4 antibody depleted the melanoma-infiltrating T_{regs} that expressed CCR4 and efficiently induced/augmented both CD4⁺ and CD8⁺ T cells that were specific for cancer-testis antigen [69]. Mogamulizumab has been approved in Japan for the treatment of CCR4-expressing adult T-cell leukemia/lymphoma (ATLL). Anti-CCR4 antibody markedly reduced eT_{regs} as well as ATLL cells and augmented ATLL antigen (cancer-testis antigen)-specific CD8⁺ T-cell responses in an ATLL patient, possibly in association with the prolonged survival of this patient [69].

Based on these preclinical data, multiple early phase clinical trials with

mogamulizumab as an eT_{reg} depletion reagent are being conducted as monotherapy (trial numbers NCT02281409 and NCT01929486[82]) and in combination with anti-PD-1 antibody (NCT02476123 and NCT02705105), anti-PD-L1 (Programmed death-ligand 1) antibody or anti-CTLA-4 antibody (NCT02301130) and anti-4-1BB agonistic antibody (NCT02444793) in advanced solid tumors, and in combination with docetaxel in non-small cell lung cancer (NCT02358473).

Anti-OX-40 antibody and anti-GITR antibody

OX-40 and GITR are members of the TNF receptor superfamily and are both co-stimulatory receptors expressed by activated T cells. On T_{regs}, OX-40 is induced after activation and GITR is constitutively expressed [83-87]. These signals reduce the suppressive activity of T_{regs} as well as enhancing activation of effector T cells.

In mouse models, an anti-OX-40 agonistic antibody augmented anti-tumor immunity in melanoma, colon cancer, glioma, breast cancer, sarcoma, renal cancer and prostate cancer [88,89]. Its effect was mainly dependent on the reduction of T_{regs} in tumor tissues. A phase I trial of an OX-40 agonist demonstrated anti-tumor activity in melanoma and renal cell cancer [90]. Early phase clinical trials evaluating OX-40 agonists in head and neck, breast and prostate cancer and in B cell lymphoma are also being investigated (NCT01862900, NCT02274155, NCT02318394 and NCT02205333). Additionally, combination of an OX-40 fusion protein (MEDI6383) and an anti-PD-L1 antibody, durvalumab, is also being investigated (NCT02221960). In

mouse models, an anti-GITR agonistic antibody stimulated strong anti-tumor immunity in fibrosarcoma, colorectal carcinoma and melanoma models by decreasing T_{reg} numbers and converting T_{reg} -mediated resistance to effector T cell activation [91-93]. Phase I clinical trials evaluating GITR agonists in solid tumors are being tested (NCT 02583165 and NCT02628574).

Small molecules targeting T_{reg} -specific signals

T_{regs} are highly dependent on PI3K signals for their maintenance and function. Inactivation of PI3K signals in T_{regs} activates $CD8^+$ T cells and induces tumor regression [94]. Therefore, not only molecules specifically expressed by T_{regs} , but also signals on which T_{regs} specifically depend could become targets to control T_{regs} .

T_{reg} depletion with vaccination

T_{reg} depletion alone may not be sufficient to establish effective anti-tumor immunity. We have shown that self-antigen (Melan-A, a differentiation antigen of melanocytes)-reactive $CD8^+$ T cells fall into an irreversible anergic state (i.e., hypo-proliferative and with low cytokine production) with a unique phenotype ($CCR7^+CTLA-4^+$) after T_{reg} -mediated suppression and they cannot be re-activated even in the absence of T_{regs} [35]. Thus, in addition to overcoming T_{reg} -mediated suppression, subsequent re-priming of effector T cells from the naive T-cell population would be necessary. At least two strategies to augment anti-cancer immunity by depleting T_{regs} prior to administering cancer vaccines have been evaluated: daclizumab or cyclophosphamide (CPA).

Humanized IgG1 monoclonal antibody targeting CD25: daclizumab.

Since T_{regs} are enriched in the $CD4^+CD25^+$ T cell fraction, T_{reg} -depletion by the CD25-depleting antibody daclizumab has been evaluated in clinical trials. When daclizumab was administered following dendritic cell vaccination in metastatic melanoma ($n=15$), not only T_{regs} but also activated effector cells were depleted and neither anti-tumor immune responses nor antibody production was observed [95]. In contrast, in breast cancer patients, administration of daclizumab followed by vaccination consisting of multiple tumor-associated peptides succeeded in T_{reg} -depletion and demonstrated favorable clinical responses [96]. Stable disease was obtained in 6 out of 10 patients. Progression-free survival was 4.8 months (95% Confidence Interval, 3.0–6.5 months). The overall survival (OS) was 27.8 months (19.5–36.1). The 2-year survival was $65.5\% \pm 17.3\%$ (rate \pm SD). No immune related adverse reaction was observed.

Cyclophosphamide. CPA is an alkylating agent that reportedly depletes T_{regs} when used in low doses. In a phase II clinical trial, patients with advanced renal cell cancer received therapeutic vaccination of IMA901 consisting of multiple tumor-associated peptides and GM-CSF with or without preceding CPA administration [97]. Patients treated with IMA901/GM-CSF/CPA showed T_{reg} reduction with augmented anti-tumor immune responses. The OS tended to be extended in the IMA901/GM-CSF/CPA-treated group ($n=33$) compared with the IMA901/GM-CSF-treated group ($n=35$) (23.5 months versus 14.8 months). A

phase III trial investigating the addition of IMA901/GM-CSF/CPA to the standard care of sunitinib was completed in 2015 and the results are awaited.

Involvement of T_{regs} in immune checkpoint inhibitors

Immune checkpoint blockade — inhibiting the immunosuppressive signals from co-inhibitory molecules — allows a resurgence in the effector function of tumor-infiltrating T cells and provides clinical success in various types of cancers including malignant melanomas and lung cancers. As immune checkpoint molecules such as CTLA-4 and PD-1 are expressed by both tumor-infiltrating effector T cells and T_{regs}, current immune checkpoint blocking agents could target T_{regs} as well. Analyses of anti-CTLA-4 antibodies in mouse models revealed that the anti-tumor efficacy was dependent on depletion of CTLA-4-expressing T_{regs} in tumors through the antibody-dependent cellular cytotoxic (ADCC) activity of the anti-CTLA-4 antibody; depletion of Fc function totally abrogated the anti-tumor effect of the anti-CTLA-4 antibody [98-100]. Additionally, PD-1-expressing T_{regs} reportedly possess higher immune suppressive function than T_{regs} without PD-1 expression in a mouse model [101]. Therefore, PD-1-blocking antibodies might act on T_{regs} to augment anti-tumor immunity as well as reversing the effector function of dysfunctional effector cells.

Yet, more than half of the treated patients did not respond to immune checkpoint blockade therapy, even if combinations of blocking antibodies were used. Immuno-monitoring of biomarkers to properly evaluate immune responses in cancer patients is critical for detecting responders. There are two types of tumor antigens: tumor-specific antigens (TSAs), which are either oncogenic viral

proteins or abnormal proteins that stem from somatic mutations (neo-antigens); and tumor-associated antigens (TAAs), which are highly or aberrantly expressed normal proteins. It is not yet determined how CD8⁺ T cells specific for each antigen contribute to clinical tumor regression and whether activation of these CD8⁺ T cells specific for self-antigens versus non-self-antigens are controlled differently.

In vitro experiments comparing T_{reg}-mediated suppression of self-antigen (Melan-A)-specific CD8⁺ T cells versus non-self (cytomegalovirus)-specific CD8⁺ T cells showed that cytomegalovirus-specific CD8⁺ T cells were resistant to suppression by T_{regs} [35], indicating that T_{reg}-mediated suppression is more prominent on self-antigen-expressing tumor cells rather than those expressing neo-antigens. It is therefore noteworthy that cancers in patients susceptible to immune checkpoint blockade monotherapy contain a large number of neo-antigens and that CD8⁺ T cells specific for the antigens are resistant to T_{reg}-mediated immune suppression. In contrast, cancers with a lower number of neo-antigens did not respond to immune checkpoint blockade and CD8⁺ T cells are under the control of T_{reg}-mediated immune suppression. Thus, integration of T_{reg}-targeting therapies that reduce T_{reg} function and/or number may expand the therapeutic spectrum of cancer immunotherapy.

Conclusion

T_{regs}, initially found as a key player of self-tolerance, have been revealed to play a critical role in tumor immunity and become a promising therapeutic target of

cancer immunology. Yet their contribution in current cancer immunotherapy has not been fully determined and further detailed studies are essential for developing novel effective cancer immunotherapies.

For Peer Review

Acknowledgement

This study was supported by Grants-in-Aid for Scientific Research (B) (H.N., No. 26290054) and for challenging Exploratory Research (H.N., No. 16K15551) from the Ministry of Education, Culture, Sports, Science and Technology of Japan and by The National Cancer Center Research and Development Fund (H.N., No. 28-A-7).

Conflict of interest

The authors have no conflict of interest on this manuscript.

References

- [1] Khattri, R., Cox, T., Yasayko, S. A. and Ramsdell, F. 2003. *An essential role for Scurfin in CD4⁺CD25⁺ T regulatory cells*. Nat Immunol 4(4): p. 337-42.
- [2] Hori, S., Nomura, T. and Sakaguchi, S. 2003. *Control of regulatory T cell development by the transcription factor Foxp3*. Science 299(5609): p. 1057-61.
- [3] Fontenot, J. D., Gavin, M. A. and Rudensky, A. Y. 2003. *Foxp3 programs the development and function of CD4⁺CD25⁺ regulatory T cells*. Nat Immunol 4(4): p. 330-6.
- [4] Sakaguchi, S., Sakaguchi, N., Asano, M. et al. 1995. *Immunologic self-tolerance maintained by activated T cells expressing IL-2 receptor alpha-chains (CD25). Breakdown of a single mechanism of self-tolerance causes various autoimmune diseases*. J Immunol 155(3): p. 1151-64.
- [5] Bennett, C.L., Christie, J., Ramsdell, F. et al. 2001. *The immune dysregulation, polyendocrinopathy, enteropathy, X-linked syndrome (IPEX) is caused by mutations of FOXP3*. Nat Genet 27(1): p. 20-1.
- [6] Wildin, R. S., Ramsdell, F., Peake, J. et al. 2001. *X-linked neonatal diabetes mellitus, enteropathy and endocrinopathy syndrome is the human equivalent of mouse scurfy*. Nat Genet 27(1): p. 18-20.
- [7] Brunkow, M. E., Jeffery, E. W., Hjerrild, K. A. et al. 2001. *Disruption of a new forkhead/winged-helix protein, scurfy, results in the fatal lymphoproliferative disorder of the scurfy mouse*. Nat Genet 27(1): p. 68-73.
- [8] Sakaguchi, S., Miyara, M., Costantino, C. M. and Hafler, D.A. 2010. *FOXP3⁺ regulatory T cells in the human immune system*. Nat Rev Immunol 10(7): p. 490-500.

- [9] Wing, K. and Sakaguchi, S. 2010. *Regulatory T cells exert checks and balances on self tolerance and autoimmunity*. Nat Immunol 11 (1): p. 7–13.
- [10] Shimizu, J., Yamazaki, S. and Sakaguchi, S. 1999. *Induction of tumor immunity by removing CD25⁺CD4⁺ T cells: a common basis between tumor immunity and autoimmunity*. J Immunol 163 (10): p. 5211–5218.
- [11] Nishikawa, H. and Sakaguchi, S. 2014. *Regulatory T cells in cancer immunotherapy*. Curr Opin Immunol 27: p. 1-7.
- [12] Hodi, F. S., O'Day, S. J., McDermott, D. F. et al. 2010. *Improved survival with ipilimumab in patients with metastatic melanoma*. N Engl J Med 363(8): p. 711-23.
- [13] Topalian, S. L., Hodi, F. S., Brahmer, J. R. et al. 2012. *Safety, activity, and immune correlates of anti-PD-1 antibody in cancer*. N. Engl. J. Med 366(26): p. 2443–2454.
- [14] Topalian, S. L., Sznol, M., McDermott, D. F. et al. 2014. *Survival, durable tumor remission, and long-term safety in patients with advanced melanoma receiving nivolumab*. J Clin Oncol 32(10): p. 1020-30.
- [15] Robert, C., Long, G.V., Brady, B. et al. 2014. *Nivolumab in previously untreated melanoma without BRAF mutation*. N. Engl. J. Med 372(4): p. 320–330.
- [16] Hamid, O., Robert, C., Daud, A. et al. 2013. *Safety and tumor responses with lambrolizumab (anti-PD-1) in melanoma*. N. Engl. J. Med 369 (2): p. 134–144.
- [17] Robert, C., Schachter, J., Long, G. V. et al. 2015. *Pembrolizumab versus ipilimumab in advanced melanoma*. N. Engl. J. Med 372(26): p. 2521–2532.

- [18] Rizvi, N. A., Mazières, J., Planchard, D. *et al.* 2015. *Activity and safety of nivolumab, an anti-PD-1 immune checkpoint inhibitor, for patients with advanced, refractory squamous non-small-cell lung cancer (CheckMate 063): a phase 2, single-arm trial.* Lancet. Oncol 16(3): p. 257–265.
- [19] Brahmer, J., Reckamp, K.L., Baas, P. *et al.* 2015. *Nivolumab versus docetaxel in advanced squamous-cell non-small-cell lung cancer.* N. Engl. J. Med 373: p. 123–135.
- [20] Borghaei, H., Paz-Ares, L., Horn, L. *et al.* 2015. *Nivolumab versus Docetaxel in Advanced Nonsquamous Non-Small-Cell Lung Cancer.* 373(17): p. 1627-39.
- [21] Brahmer, J.R., Drake, C.G., Wollner, I. *et al.* 2010. *Phase I study of single-agent anti-programmed death-1 (MDX-1106) in refractory solid tumors: safety, clinical activity, pharmacodynamics, and immunologic correlates.* J. Clin. Oncol 28 (19): p. 3167–3175.
- [22] Brahmer, J.R., Tykodi, S.S., Chow, L. Q. *et al.* 2012. *Safety and activity of anti-PD-L1 antibody in patients with advanced cancer.* N. Engl. J. Med 366 (26): p. 2455-65.
- [23] Powles, T., Eder, J.P., Fine, G.D. *et al.* 2014. *MPDL3280A (anti-PD-L1) treatment leads to clinical activity in metastatic bladder cancer.* Nature 515(7528): p. 558–562.
- [24] Ansell, S. M., Lesokhin, A. M., Borrello, I. *et al.* 2014. *PD-1 blockade with nivolumab in relapsed or refractory Hodgkin's lymphoma.* N. Engl. J. Med 372: p. 311–319.
- [25] Larkin, J., Chiarion-Sileni, V., Gonzalez, R. *et al.* 2015. *Combined nivolumab*

and ipilimumab or monotherapy in untreated melanoma. N. Engl. J. Med 373: p. 23–34.

[26] Chapman, P. B., D'Angelo, S. P. and Wolchok, J. D. 2015. *Rapid eradication of a bulky melanoma mass with one dose of immunotherapy*. N. Engl. J. Med 372: p. 2073–2074.

[27] Postow, M. A., Chesney, J., Pavlick, A. C., *et al.* 2015. *Nivolumab and ipilimumab versus ipilimumab in untreated melanoma*. N. Engl. J. Med. 372(21): p. 2006–2017.

[28] Topalian, S. L., Drake, C.G. and Pardoll, D. M. 2015. *Immune checkpoint blockade: a common denominator approach to cancer therapy*. Cancer Cell 27(4): p. 450-61.

[29] Rizvi, N. A., Hellmann, M. D., Snyder, A. *et al.* 2015. *Mutational landscape determines sensitivity to PD-1 blockade in non-small cell lung cancer*. Science 348(6230): p. 124–128.

[30] Snyder, A., Makarov, V., Merghoub, T. *et al.* 2014. *Genetic basis for clinical response to CTLA-4 blockade in melanoma*. N Engl J Med 371(23): p. 2189-99.

[31] Van Allen, E. M., Miao, D., Schilling, B. *et al.* 2015. *Genomic correlates of response to CTLA4 blockade in metastatic melanoma*. Science 350(6257): p. 207–211.

[32] Le, D.T., Uram, J.N., Wang, H. *et al.* 2015. *PD-1 Blockade in Tumors with Mismatch-Repair Deficiency*. N Engl J Med 372(26): p. 2509-20.

[33] Matsushita, H., Vesely, M. D., Koboldt, D. C. *et al.* 2012. *Cancer exome analysis reveals a T-cell-dependent mechanism of cancer immunoediting*. Nature 482(7385): p. 400-4.

- [34] Gubin, M. M., Zhang, X., Schuster, H. *et al.* 2014. *Checkpoint blockade cancer immunotherapy targets tumour-specific mutant antigens.* Nature 515(7528): p. 577-81.
- [35] Maeda, Y., Nishikawa, H., Sugiyama, D. *et al.* 2014. *Detection of self-reactive CD8⁺ T cells with an anergic phenotype in healthy individuals.* Science 346(6216): p. 1536-40.
- [36] Adeegbe, D.O. and Nishikawa, H. 2013. *Natural and induced T regulatory cells in cancer.* Front Immunol 4: p. 190.
- [37] Boyman, O. and Sprent, J. 2012. *The role of interleukin-2 during homeostasis and activation of the immune system.* Nat Rev Immunol 12(3): p. 180-190.
- [38] Malchow, S., Leventhal, D.S., Nishi, S. *et al.* 2013. *Aire-dependent thymic development of tumor-associated regulatory T cells.* Science 339(6124): p. 1219-24.
- [39] Jordan, M. S., Boesteanu, A., Reed, A. J. *et al.* 2001. *Thymic selection of CD4⁺CD25⁺ regulatory T cells induced by an agonist self-peptide.* Nat Immunol 2(4): p. 301–306.
- [40] Coombes, J. L., Siddiqui, K. R., Arancibia-Cárcamo, C. V. *et al.* 2007. *A functionally specialized population of mucosal CD103⁺ DCs induces Foxp3⁺ regulatory T cells via a TGF- β and retinoic acid-dependent mechanism.* J. Exp. Med 204(8): p. 1757–1764.
- [41] Walker, M. R., Carson, B. D., Nepom, G. T., Ziegler, S. F. and Buckner, J. H. 2005. *De novo generation of antigen-specific CD4⁺CD25⁺ regulatory T cells from human CD4⁺CD25⁻ cells.* Proc. Natl Acad. Sci. USA 102(11): p. 4103–4108.

- [42] Tran, D. Q., Ramsey, H. and Shevach, E. M. 2007. *Induction of FOXP3 expression in naive human CD4⁺FOXP3 T cells by T-cell receptor stimulation is transforming growth factor- β dependent but does not confer a regulatory phenotype*. Blood 110(8): p. 2983–2990.
- [43] Ellis, G. I., Reneer, M. C., Vélez-Ortega, A. C., McCool, A., Martí, F. 2012. *Generation of Induced Regulatory T Cells from Primary Human Naïve and Memory T Cells*. J Vis Exp 62: p. 3738.
- [44] Hsu, P., Santner-Nanan, B., Hu, M. et al. 2015. *IL-10 Potentiates Differentiation of Human Induced Regulatory T Cells via STAT3 and Foxo1*. J Immunol 195(8): p. 3665-74.
- [45] Liu, W., Putnam, A. L., Xu-Yu, Z. et al. 2006. *CD127 expression inversely correlates with FoxP3 and suppressive function of human CD4⁺ T reg cells*. J Exp Med 203(7): p. 1701-11.
- [46] Seddiki, N., Santner-Nanan, B., Martinson, J. et al. 2006. *Expression of interleukin (IL)-2 and IL-7 receptors discriminates between human regulatory and activated T cells*. J Exp Med 203(7): p. 1693-700.
- [47] Mazzucchelli, R., Durum, S. K. 2007. *Interleukin-7 receptor expression: intelligent design*. Nat Rev Immunol 7(2): p. 144-54.
- [48] Miyara, M., Yoshioka, Y., Kitoh, A. et al. 2009. *Functional delineation and differentiation dynamics of human CD4⁺ T cells expressing the FoxP3 transcription factor*. Immunity 30 (6): p. 899–911.
- [49] Wing, K., Onishi, Y., Prieto-Martin, P. et al. 2008. *CTLA-4 control over Foxp3⁺ regulatory T cell function*. Science 2008; 322: p. 271.
- [50] Takahashi, T., Kuniyasu, Y., Toda, M. et al. 1998. *Immunologic self-tolerance*

maintained by CD25⁺CD4⁺ naturally anergic and suppressive T cells: induction of autoimmune disease by breaking their anergic/suppressive state. Int Immunol 10: p. 1969.

[51] Thornton, A.M. and Shevach, E.M. 1998. *CD4⁺CD25⁺ immunoregulatory T cells suppress polyclonal T cell activation in vitro by inhibiting interleukin 2 production.* J Exp Med 188:p. 287.

[52] Walker, L.S. and Sansom, D.M. 2011. *The emerging role of CTLA4 as a cell-extrinsic regulator of T cell responses.* Nat Rev Immunol. 11: p.852-63.

[53] Onizuka, S., Tawara, I., Shimizu, J., Sakaguchi, S., Fujita, T. and Nakayama, E. 1999. *Tumor rejection by in vivo administration of anti-CD25 (interleukin-2 receptor alpha) monoclonal antibody.* Cancer Res. 59(13): p.3128-33.

[54] Shimizu, J., Yamazaki, S. and Sakaguchi, S. 1999. *Induction of tumor immunity by removing CD25⁺CD4⁺ T cells: a common basis between tumor immunity and autoimmunity.* J Immunol. 163(10): p. 5211-8.

[55] Yu, P., Lee, Y., Liu, W. et al. 2005. *Intratumor depletion of CD4⁺ cells unmasks tumor immunogenicity leading to the rejection of late-stage tumors.* J Exp Med. 201(5): p.779-91.

[56] Fridman, W. H., Pagès, F., Sautès-Fridman, C. and Galon, J. 2012. *The immune contexture in human tumours: impact on clinical outcome.* Nature Reviews Cancer 12(4): p. 298-306.

[57] Sato, E., Olson, S.H., Ahn, J., et al. 2005. *Intraepithelial CD8⁺ tumor-infiltrating lymphocytes and a high CD8⁺/regulatory T cell ratio are associated with favorable prognosis in ovarian cancer.* Proc Natl Acad Sci U S A 102 (51): p. 18538–18543.

- [58] Turk MJ, Guevara-Patiño JA, Rizzuto GA, Engelhorn ME, Sakaguchi S, and Houghton AN. 2004. *Concomitant tumor immunity to a poorly immunogenic melanoma is prevented by regulatory T cells*. J Exp Med. 200(6):771-82.
- [59] Saito, T., Nishikawa, H., Wada, H. et al. 2016. *Two FOXP3⁺CD4⁺ T-cell subpopulations distinctly control the prognosis of colorectal cancers*. Nat Med, in press.
- [60] Gobert, M., Treilleux, I., Bendriss-Vermare, N. et al. 2009. *Regulatory T cells recruited through CCL22/CCR4 are selectively activated in lymphoid infiltrates surrounding primary breast tumors and lead to an adverse clinical outcome*. Cancer Res 69(5): p. 2000-9.
- [61] Curiel, T. J., Coukos, G., Zou, L. et al. 2004. *Specific recruitment of regulatory T cells in ovarian carcinoma fosters immune privilege and predicts reduced survival*. Nat Med 10 (9): p. 942–949.
- [62] Svensson, H., Olofsson, V., Lundin, S. et al. 2012. *Accumulation of CCR4⁺CTLA-4⁺FOXP3⁺CD25(hi) regulatory T cells in colon adenocarcinomas correlate to reduced activation of conventional T cells*. PLoS One 7(2): e30695.
- [63] Watanabe, Y., Katou, F., Ohtani, H. et al. 2010. *Tumor-infiltrating lymphocytes, particularly the balance between CD8(+) T cells and CCR4(+) regulatory T cells, affect the survival of patients with oral squamous cell carcinoma*. Oral Surg Oral Med Oral Pathol Oral Radiol Endod 109(5): p. 744-52.
- [64] Ishida, T., Ishii, T., Inagaki, A. et al. 2006. *Specific recruitment of CC chemokine receptor 4-positive regulatory T cells in Hodgkin lymphoma fosters immune privilege*. Cancer Res 66(11): p. 5716-22.

- [65] Facciabene, A., Peng, X., Hagemann, I. S. *et al.* 2011. *Tumour hypoxia promotes tolerance and angiogenesis via CCL28 and T(reg) cells.* 475(7355): p. 226-30.
- [66] Wei, S., Kryczek, I., Edwards, R. P. *et al.* 2007. *Interleukin-2 administration alters the CD4⁺FOXP3⁺ T-cell pool and tumor trafficking in patients with ovarian carcinoma.* Cancer Res 67(15): p. 7487-94.
- [67] Tan, M.C., Goedegebuure, P.S., Belt, B.A., *et al.* 2009. *Disruption of CCR5-dependent homing of regulatory T cells inhibits tumor growth in a murine model of pancreatic cancer.* J Immunol 182(3): p. 1746-55.
- [68] Spranger, S., Spaapen, R. M., Zha, Y. *et al.* 2013. *Up-Regulation of PD-L1, IDO, and Tregs in the melanoma tumor microenvironment is driven by CD8⁺ T cells.* Sci Transl Med. 5(200): p. 200ra116.
- [69] Sugiyama, D., Nishikawa, H., Maeda, Y. *et al.* 2013. *Anti-CCR4 mAb selectively depletes effector-type FoxP3⁺CD4⁺ regulatory T cells, evoking antitumor immune responses in humans.* Proc Natl Acad Sci U S A 110(44): p. 17945-50.
- [70] Tan, W., Zhang, W., Strasner, A. *et al.* 2011. *Tumour-infiltrating regulatory T cells stimulate mammary cancer metastasis through RANKL-RANK signalling.* Nature 470(7335): p. 548-53.
- [71] Ghiringhelli, F., Puig, P.E., Roux, S. *et al.* 2005. *Tumor cells convert immature myeloid dendritic cells into TGF-beta-secreting cells inducing CD4⁺CD25⁺ regulatory T cell proliferation.* J Exp Med 202(7): p. 919-29.
- [72] Nishikawa, H., Kato, T., Tawara, I. *et al.* 2005. *Definition of target antigens for naturally occurring CD4(+) CD25(+) regulatory T cells.* J Exp Med 201(5): p.

681-6.

[73] Hindley, J. P., Ferreira, C., Jones, E. *et al.* 2011. *Analysis of the T-cell receptor repertoires of tumor-infiltrating conventional and regulatory T cells reveals no evidence for conversion in carcinogen-induced tumors.* Cancer Res 71(3): p. 736–4610.

[74] Sainz-Perez, A., Lim, A., Lemercier, B. and Leclerc, C. 2012. *The T-cell receptor repertoire of tumor-infiltrating regulatory T lymphocytes is skewed toward public sequences.* Cancer Res 72(14): p. 3557–6910.

[75] Fourcade, J., Sun, Z., Kudela, P. *et al.* 2010. *Human tumor antigen-specific helper and regulatory T cells share common epitope specificity but exhibit distinct T cell repertoire.* J Immunol 184 (12): p. 6709–6718.

[76] Vence, L., Palucka, A. K., Fay, J. W. *et al.* 2007. *Circulating tumor antigen-specific regulatory T cells in patients with metastatic melanoma.* Proc Natl Acad Sci U S A 104(52): p. 20884-9.

[77] Wang, H. Y., Lee, D. A., Peng, G. *et al.* 2004. *Tumor-specific human CD4⁺ regulatory T cells and their ligands: implications for immunotherapy.* Immunity 20(1): p. 107-18.

[78] Wang, H. Y., Lee, D. A., Peng, G. *et al.* 2004. *Tumor-specific human CD4⁺ regulatory T cells and their ligands: implications for immunotherapy.* Immunity 20(1): p. 107-18.

[79] Wang, H. Y., Peng, G., Guo, Z., Shevach, E. M. and Wang, R. F. 2005. *Recognition of a new ARTC1 peptide ligand uniquely expressed in tumor cells by antigen-specific CD4⁺ regulatory T cells.* J Immunol 174(5): p. 2661-70.

[80] Bonertz, A., Weitz, J., Pietsch, D. H. *et al.* 2009. *Antigen-specific Tregs*

control T cell responses against a limited repertoire of tumor antigens in patients with colorectal carcinoma. J Clin Invest 119 (11): p. 3311–3321.

[81] Lehe, C., Ghebeh, H., Al-Sulaiman, A. *et al.* 2008. *The Wilms' tumor antigen is a novel target for human CD4⁺ regulatory T cells: implications for immunotherapy.* Cancer Res 68(15): p. 6350-9.

[82] Kurose, K., Ohue, Y., Wada, H. *et al.* 2015. *Phase Ia Study of FoxP3⁺ CD4 Treg Depletion by Infusion of a Humanized Anti-CCR4 Antibody, KW-0761, in Cancer Patients.* Clin Cancer Res. 21(19): p.4327-36.

[83] Jensen, S. M., Maston, L. D., Gough, M. J. *et al.* 2010. *Signaling through OX40 enhances antitumor immunity.* Semin Oncol 37(5): p. 524-32.

[84] Griseri, T., Asquith, M., Thompson, C. and Powrie, F. 2010. *OX40 is required for regulatory T cell-mediated control of colitis.* J. Exp. Med 207(4): p. 699–709.

[85] Hirschhorn-Cymerman, D., Rizzuto, G. A., Merghoub, T. *et al.* 2009. *OX40 engagement and chemotherapy combination provides potent antitumor immunity with concomitant regulatory T cell apoptosis.* J. Exp. Med 206(5): p. 1103–1116.

[86] Schaer, D. A., Cohen, A. D. and Wolchok, J. D. 2010. *Anti-GITR antibodies — potential clinical applications for tumor immunotherapy.* Curr. Opin. Investig. Drugs 206(5): p. 1378–1386.

[87] Schaer, D. A., Budhu, S., Liu, C. *et al.* 2013. *GITR pathway activation abrogates tumor immune suppression through loss of regulatory T cell lineage stability.* Cancer Immunol Res 1(5): p. 320-31.

[88] Jensen, S. M., Maston, L. D., Gough, M. J. *et al.* 2010. *Signaling through OX40 enhances antitumor immunity.* Semin Oncol 37(5): p. 524-32.

- [89] Bulliard, Y., Jolicoeur, R., Zhang, J. *et al.* 2014. *OX40 engagement depletes intratumoral Tregs via activating Fc γ Rs, leading to antitumor efficacy.* Immunol Cell Biol 92(6): p. 475-80.
- [90] Curti, B. D., Kovacsovics-Bankowski, M., Morris, N. *et al.* 2013. *OX40 is a potent immune-stimulating target in late-stage cancer patients.* Cancer Res 73(24): p. 7189-98.
- [91] Mitsui, J. *et al.* 2010. *Two distinct mechanisms of augmented antitumor activity by modulation of immunostimulatory/inhibitory signals.* Clin. Cancer Res 16(10): p. 2781–2791.
- [92] Bulliard, Y., Jolicoeur, R., Windman, M. *et al.* 2013. *Activating Fc γ receptors contribute to the antitumor activities of immunoregulatory receptor-targeting antibodies.* J. Exp. Med 210(9): p. 1685–1693.
- [93] Cohen, A. D., Schaer, D. A., Liu, C. *et al.* 2010. *Agonist anti-GITR monoclonal antibody induces melanoma tumor immunity in mice by altering regulatory T cell stability and intra-tumor accumulation.* PLoS ONE 5(5): e10436.
- [94] Ali, K., Soond, D.R., Piñeiro, R. *et al.* 2014. *Inactivation of PI(3)K p110 δ breaks regulatory T-cell-mediated immune tolerance to cancer.* Nature 510(7505): p. 407-11.
- [95] Jacobs, J. F., Punt, C. J., Lesterhuis, W. J. *et al.* 2010. *Dendritic cell vaccination in combination with anti-CD25 monoclonal antibody treatment: a phase I/II study in metastatic melanoma patients.* Clin Cancer Res 16(20): p. 5067-78.
- [96] Rech, A. J., Mick, R., Martin, S. *et al.* 2012. *CD25 blockade depletes and selectively reprograms regulatory T cells in concert with immunotherapy in*

cancer patients. Sci Transl Med 4(134): p. 134ra62.

[97] Walter, S., Weinschenk, T., Stenzl, A. *et al.* 2012. *Multipeptide immune response to cancer vaccine IMA901 after single-dose cyclophosphamide associates with longer patient survival*. Nat Med 18(8): p. 1254-61.

[98] Simpson, T. R., Li, F., Montalvo-Ortiz, W., Sepulveda, M. A. *et al.* 2013. *Fc-dependent depletion of tumor-infiltrating regulatory T cells co-defines the efficacy of anti-CTLA-4 therapy against melanoma*. J. Exp. Med 210(9): p. 1695–1710.

[99] Selby, M. J., Engelhardt, J. J., Quigley, M. *et al.* 2013. *Anti-CTLA-4 antibodies of IgG2a isotype enhanced antitumor activity through reduction of intratumoral regulatory T cells*. Cancer Immunol. Res 1(1): p. 32–42.

[100] Matheu, M. P., Othy, S., Greenberg, M. L. *et al.* 2015. *Imaging regulatory T cell dynamics and CTLA4-mediated suppression of T cell priming*. Nat. Commun 6: p. 6219.

[101] Park, H. J., Park, J. S., Jeong, Y. H. *et al.* 2015. *PD-1 upregulated on regulatory T cells during chronic virus infection enhances the suppression of CD8⁺ T cell immune response via the interaction with PD-L1 expressed on CD8⁺ T cells*. J Immunol 194(12): p. 5801-11.

[102] Jaafar, F., Righi, E., Lindstrom, V. *et al.* 2009. *Correlation of CXCL12 expression and FoxP3⁺ cell infiltration with human papillomavirus infection and clinicopathological progression of cervical cancer*. Am J Pathol 175(4): p. 1525-35.

[103] Redjimi, N., Raffin, C., Raimbaud, I. *et al.* 2012. *CXCR3⁺ T regulatory cells selectively accumulate in human ovarian carcinomas to limit type I immunity*.

Cancer Res 72(17): p. 4351-60.

[104] Liu, J., Zhang, N., Li, Q. *et al.* 2011. *Tumor-associated macrophages recruit CCR6⁺ regulatory T cells and promote the development of colorectal cancer via enhancing CCL20 production in mice.* PLoS One 6(4): e19495.

[105] Schlecker, E., Stojanovic, A., Eisen, C. *et al.* 2012. *Tumor-infiltrating monocytic myeloid-derived suppressor cells mediate CCR5-dependent recruitment of regulatory T cells favoring tumor growth.* J Immunol. 189(12): p. 5602-11.

Tables

Table 1. Classification of FoxP3⁺CD4⁺ T cells

Cell subset	Phenotype/cytokines	Characteristics
Naive T _{regs} (nT _{regs}): fraction I, resting T _{regs} CD45RA ⁺ FoxP3 ^{low} CD4 ⁺	CTLA-4 ^{low} CD25 ^{high} CD127 ^{low/-} Ki-67 ⁻	Weak suppressive activity. Differentiate to effector T _{regs} upon TCR stimulation.
Effector T _{regs} (eT _{regs}): fraction II, activated T _{regs} CD45RA ⁻ FoxP3 ^{high} CD4 ⁺	CTLA-4 ^{high} CD25 ^{high} Ki-67 ⁺ , PD-1 ⁺ , TIM-3 ⁺ , GITR ⁺ , Fas ⁺ , IL-10 ⁺ , TGF-β ⁺	Strong suppressive and proliferative activity. Prone to apoptosis. Tend to increase in peripheral blood with aging.
Non-T _{regs} : fraction III CD45RA ⁻ FoxP3 ^{low} CD4 ⁺	IL-2 ⁺ , IFN-γ ⁺ , IL-17 ⁺	Heterogeneous population. No suppressive activity.

For Peer Review

Table 2. T_{reg}-mediated suppressive mechanisms

Molecules ^a	Ligands	Function
<i>Contact-dependent suppression</i>		
CTLA-4	B7-1/B7-2	Blockade of B7–CD28 costimulatory signals by binding to B7 with greater avidity. Inhibition of maturation of antigen-presenting cells (APCs) by physical transfer of B7 on/in T _{regs} or transmitting reverse signals to induce IDO in APCs.
?	?	Rendering self-antigen-specific CD8 ⁺ T cells to a stable anergic state expressing CCR7 and CTLA-4.
CD39, CD73	A _{2A} receptor	Conversion of ATP, an inflammatory molecule and a danger signal, to inhibitory adenosine by CD39/CD73.
Granzyme, perforin	Not applicable	Direct cytotoxicity against effector cells.
<i>Cytokine-mediated suppression</i>		
CD25 (IL-2 receptor α-chain)	IL-2	Inhibition of differentiation to effector cells by consuming IL-2.
TGF-β, IL-10,IL-35	Not applicable	Inhibition of effector T cells, macrophages, cancer-associated fibroblasts, etc.

^aThe major mechanisms are mediated by CTLA-4 and by CD25.

Table 3. Chemokines and chemokine receptors related to T_{reg} trafficking

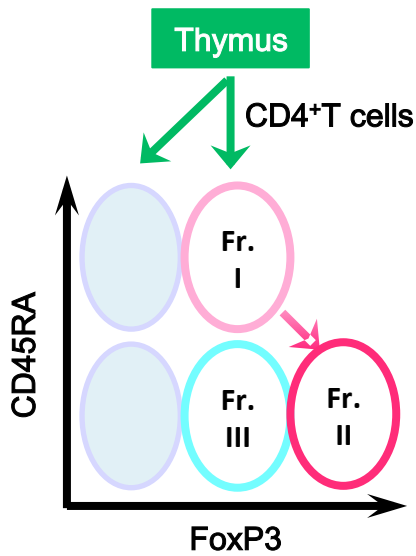
Cancer	Chemokine receptor on T _{regs}	Chemokine	Origin of chemokines	Ref
<i>Human</i>				
Breast	CCR4	CCL12	Tumor cells	60
Cervical	ND	CXCL12	Tumor cells	102
Colorectal	CCR4	ND	ND	62
Oral squamous	CCR4	ND	ND	63
Ovarian	CCR4	CCL12	TAMs	61
	CCR10	CCL28	Tumor cells	65
	CXCR3	ND	Tumor	103
	CXCR4	CXCL12	Tumor	66
Pancreatic	CCR5	CCL5	Tumor cells	67
Hodgkin lymphoma	CCR4	ND	ND	64
<i>Mouse</i>				
Colorectal	CCR6	CCL20	TAMs	104
Melanoma	CCR4	CCL22	Tumor	68
	CCR5	CCL3,4,5	MDSCs	105
Pancreatic	CCR5	CCL5	Tumor cells	67

MDSCs, myeloid-derived suppressor cells; ND, not described; TAMs, tumor-associated macrophages.

Figure legends

Fig. 1. Identification of human T_{regs} . Human T_{regs} are classified into naive and effector T_{regs} by the expression levels of a naive marker CD45RA and of FoxP3. In TMEs compared with blood, naive T_{reg} (fraction I) numbers are reduced and highly suppressive effector T_{reg} (fraction II) numbers are increased, expressing CTLA-4, PD-1, TIM-3, and CCR4. The frequency of FoxP3⁺ non- T_{reg} cells (fraction III) is variable depending on cancer types.

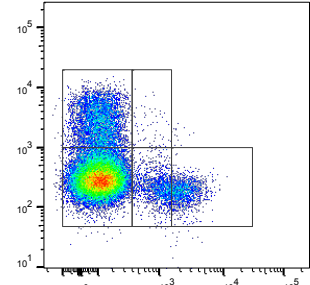
Fig. 2. T_{regs} in cancer immunity. In cancer patients with minimal neo-antigens (top part of the figure), T_{regs} appear to be primed at the secondary lymphoid organs and traffic to the TME by chemotaxis. T_{regs} suppress effective anti-tumor immunity and/or contribute to tumor progression and metastasis. In contrast, in cancer patients with abundant neo-antigens (bottom part of the figure), effector cells including CD8⁺ T cells are primed and expanded; while they are suppressed by tumor local sites by immune suppressive network and chronic exposure to cancer antigens in tumors, they are yet on stand-by for tumor killing upon re-stimulation with inhibition of immune suppressive network, particularly PD-1 signaling. Grz, granzyme; MDSC, myeloid-derived suppressor cell; Prf, perforin; T_{R} , regulatory T cell.



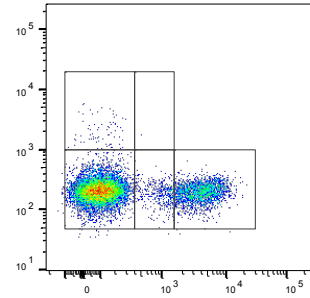
Fr.I, naïve T_{REG}s
Fr.II, effector T_{REG}s
Fr.III, non-T_{REG}s

Cancer
Patient

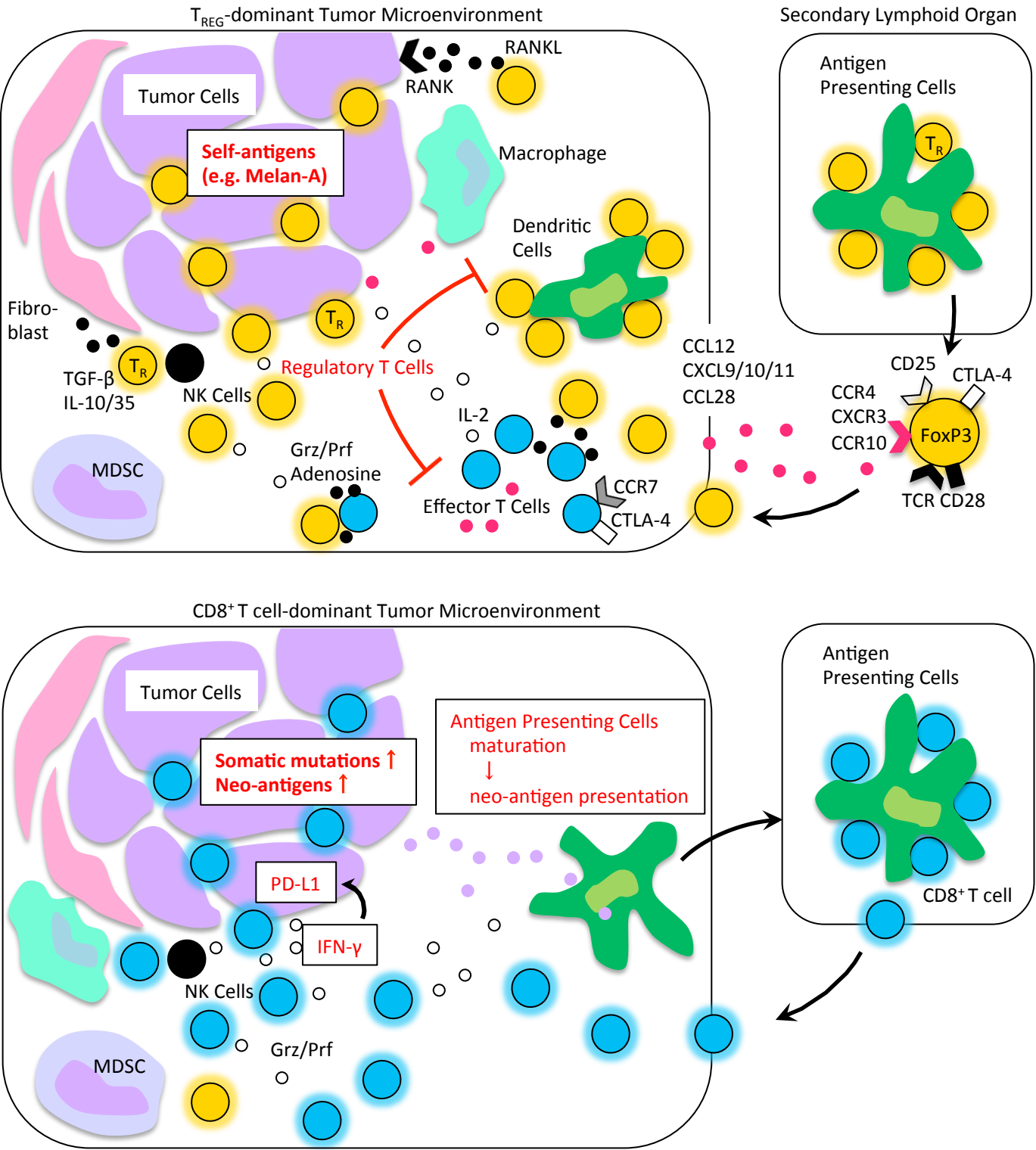
Peripheral
Blood



Tumor
Tissues



- naïve T_{REG}s ↓
- effector T_{REG}s ↑
CTLA-4⁺PD-1⁺TIM-3⁺CCR4⁺
- non-T_{REG}s ↑ ~ ↓



T_R, regulatory T cells. MDSC, myeloid-derived suppressor cells. Grz, granzyme. Prf, perforin.