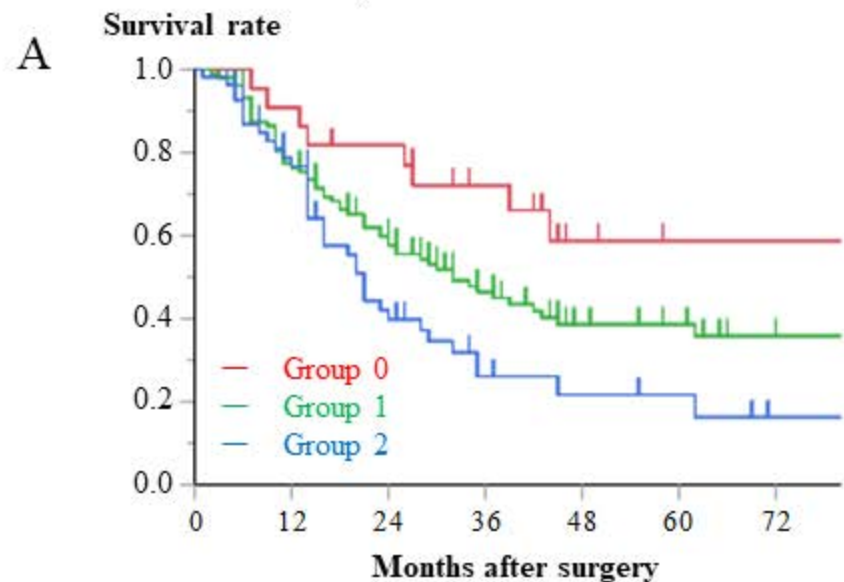


Median OS
 Group 0 103.4
 Group 1 33.3
 Group 2 21.3

$P = 0.0653$
 $P = 0.0380^*$

$P = 0.0022^*$



No at risk

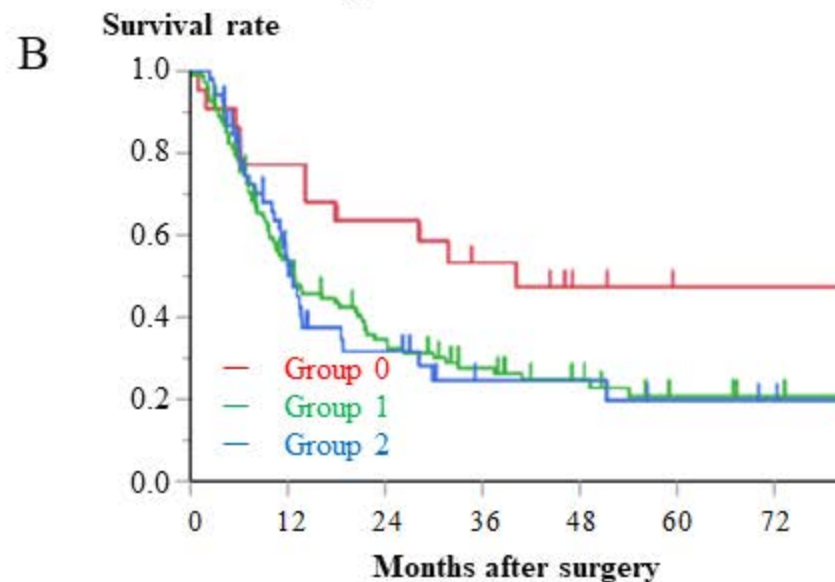
Group 0	22	21	18	13	7	5	5
Group 1	113	78	56	35	20	16	9
Group 2	61	38	19	11	6	5	2

Overall survival

Median RFS
 Group 0 40.2
 Group 1 12.9
 Group 2 12.6

$P = 0.0408^*$
 $P = 0.9704$

$P = 0.0258^*$



No at risk

Group 0	22	18	14	10	6	4	4
Group 1	113	51	31	23	13	9	6
Group 2	61	21	13	6	6	4	2

Recurrence free survival