

**Table 1. Clinical characteristics and gene abnormalities in patients with PS deficiency.**

case	Age (years)	Sex	PS Ag (%)		PS Ac (%)	OAC	Thrombosis	Mutation	Predicted AA change	Location
			total	free						
1	62	M	49	39	21	(+)	DVT	TGT → TAT	C80Y	exon 5
2	31	F	77	49	36	(-)	DVT	CGT → CAT	R314H	exon 10
3	34	F	63	ND	38	(+)	cerebral infarction	<u>CGT</u> → <u>TGT</u>	<u>R275C</u>	exon 9
4	40	M	66	26	26	(-)	DVT	<u>CCG</u> → <u>CAG</u>	<u>P375Q</u>	exon 11
								<u>GAT</u> → <u>TAT</u>	<u>D455Y</u>	exon 12

The novel mutations are underlined.

M, male; F, female; ND, not done; DVT, deep vein thrombosis; OAC, oral anticoagulant therapy at PS assays.

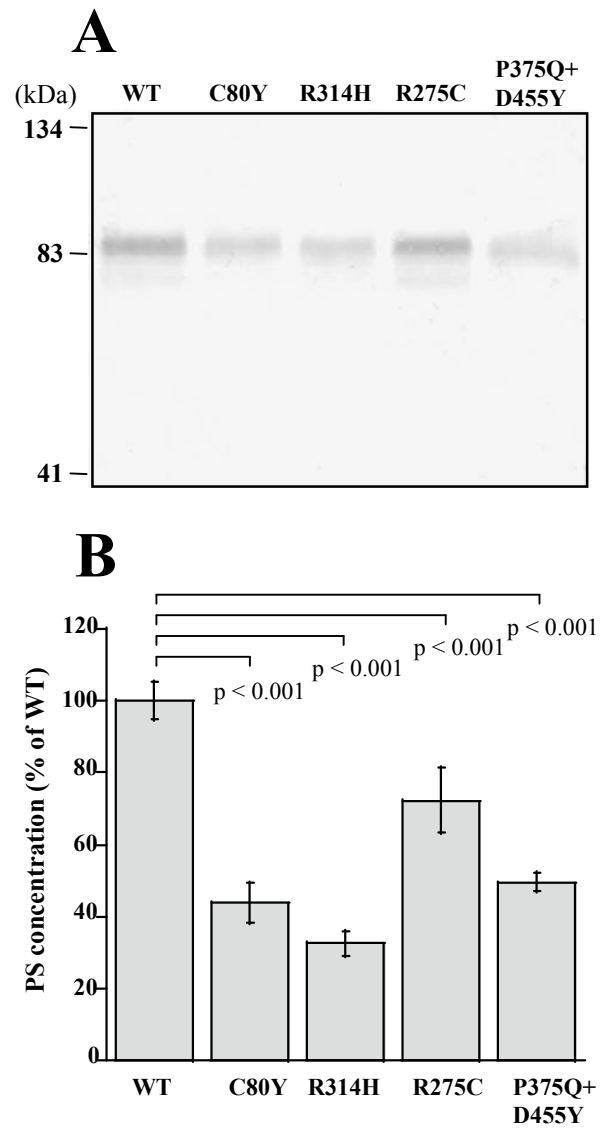


Fig. 1.

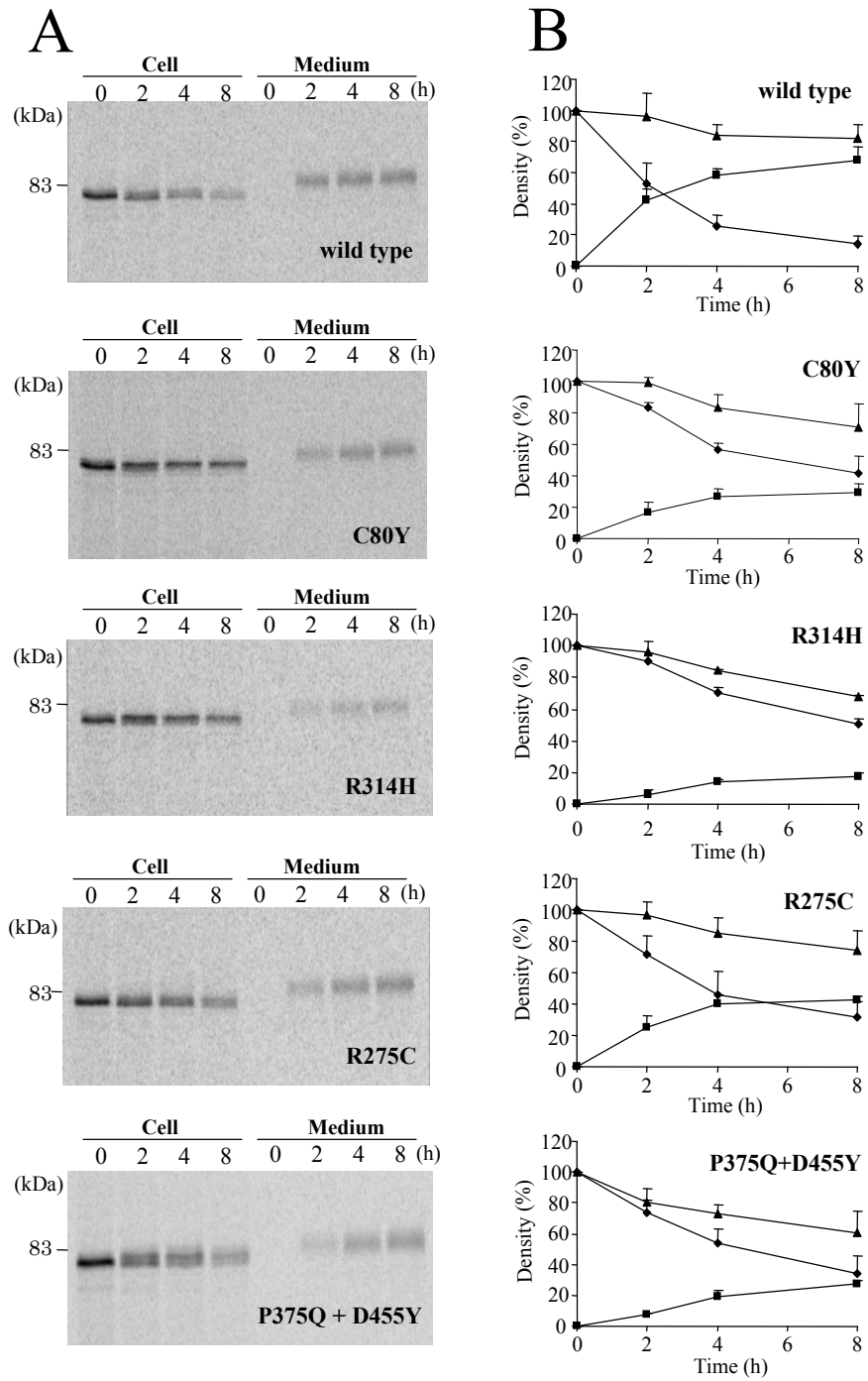


Fig. 2.

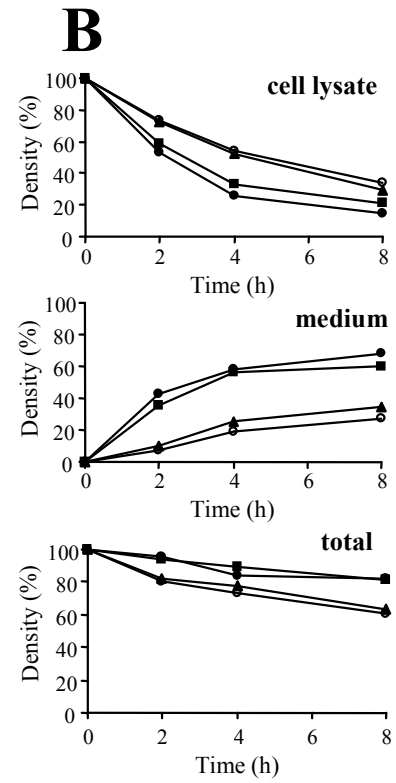
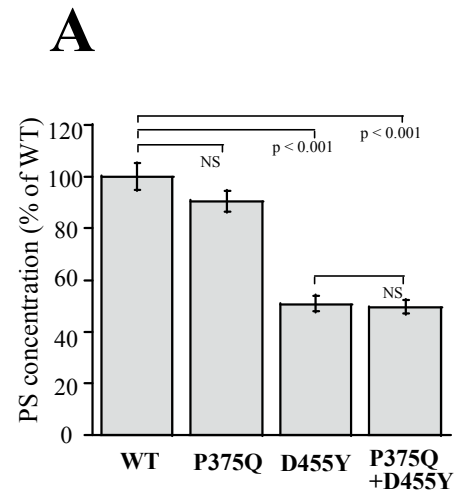


Fig. 3.

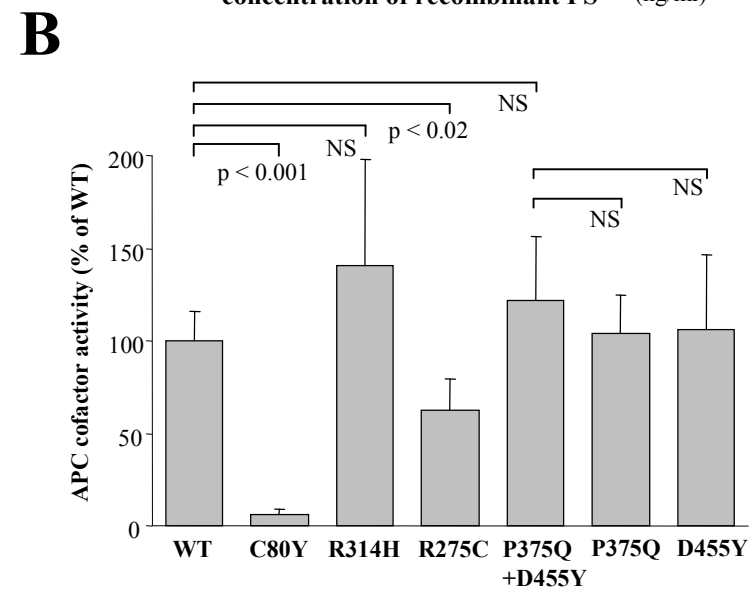
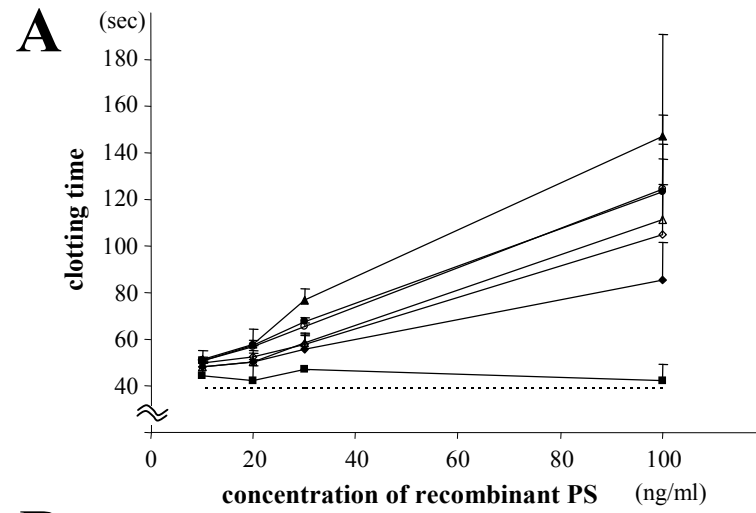


Fig. 4.